

## Collecting Data with the CSI Wireless GPS and RECON Unit

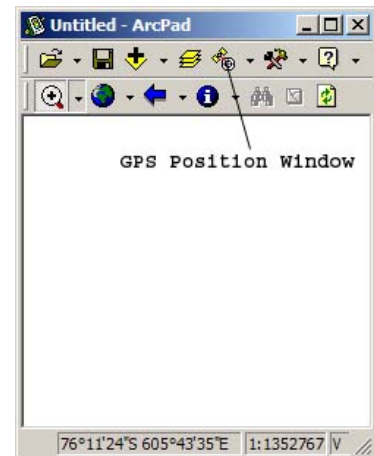
The CSI Wireless GPS antenna appears not to communicate with Trimble's proprietary software (e.g. TerraSync). Therefore, the user needs to use ESRI's ArcPad software. At present, ArcPad 6.0 is installed on both RECON units. This is not the most recent version of this software.

1) The first step is to turn on the RECON unit and start the ArcPad application.

a) Press the start menu and select "ArcPad 6.0.3"

2) The next step is to activate the GPS.

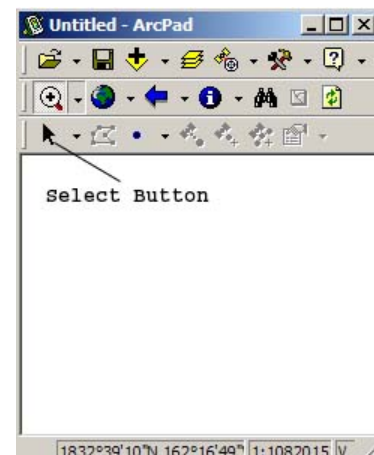
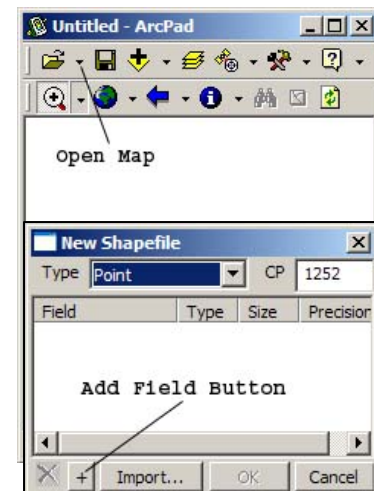
- a) Tap the "GPS Position Window" button.
- b) When asked if you would like to activate the GPS, click "Yes".
- c) This activates the GPS cursor and Position window.
- d) Click on the coordinates in the Position window to select UTM coordinates.
- e) Close the Position window by clicking on the "X" button.



Since ArcPad is a portable version of ESRI's ArcGIS, GPS coordinates are recorded to shapefile format that can be imported directly into ArcGIS.

3) Recording GPS readings to a Point shapefile.

- a) Click the arrow next to the "Open Map" button.
- b) Select "New Layer". This opens the "New Shapefile" window.
- c) Click on the "Add Field" button. This opens the new field window.
- d) Type descrip into the "Name" field. Enter 40 into the "Length" field.
- e) Click OK.
- f) In the "New Shapefile" window, click OK.
- g) Save the shapefile to a new directory named for the current project, or even the date, this will facilitate an easier transfer to a computer or laptop later.
- h) The GPS shapefile toolbar will now appear.
- i) To record a point, click on the arrow next to the Select drop-down menu and select "Select at GPS Position". This will record a point at the current GPS position.
- j) You can enter a description into the DESCRIP field while ArcPad records the point.
- l) Click OK once the GPS has finished averaging points.



You can perform the same operation with lines and polygons. Feel free to experiment with the program. One of the benefits of using ArcPad is that you can watch the map draw itself in the bottom portion of the screen as you record features. Use this capability to check that your map is accurate. If the features you are mapping appear distorted, you might want to map them again in order to get a more representative shape or series of points.

To exit the program, click on the “Open Map” drop down menu and select “Exit”. If prompted to save the map, you can say no because the files were automatically saved as you created them.

To transfer files from the RECON to a computer, simply connect the RECON unit to a computer via a USB cable (make sure you have the ActiveSync software installed, google it if you don't have a copy). When prompted, select “Guest Partnership”. Using Windows Explorer, navigate to the directory where you stored the files and transfer the entire directory to your computer. These files can be opened with ArcGIS without further work.